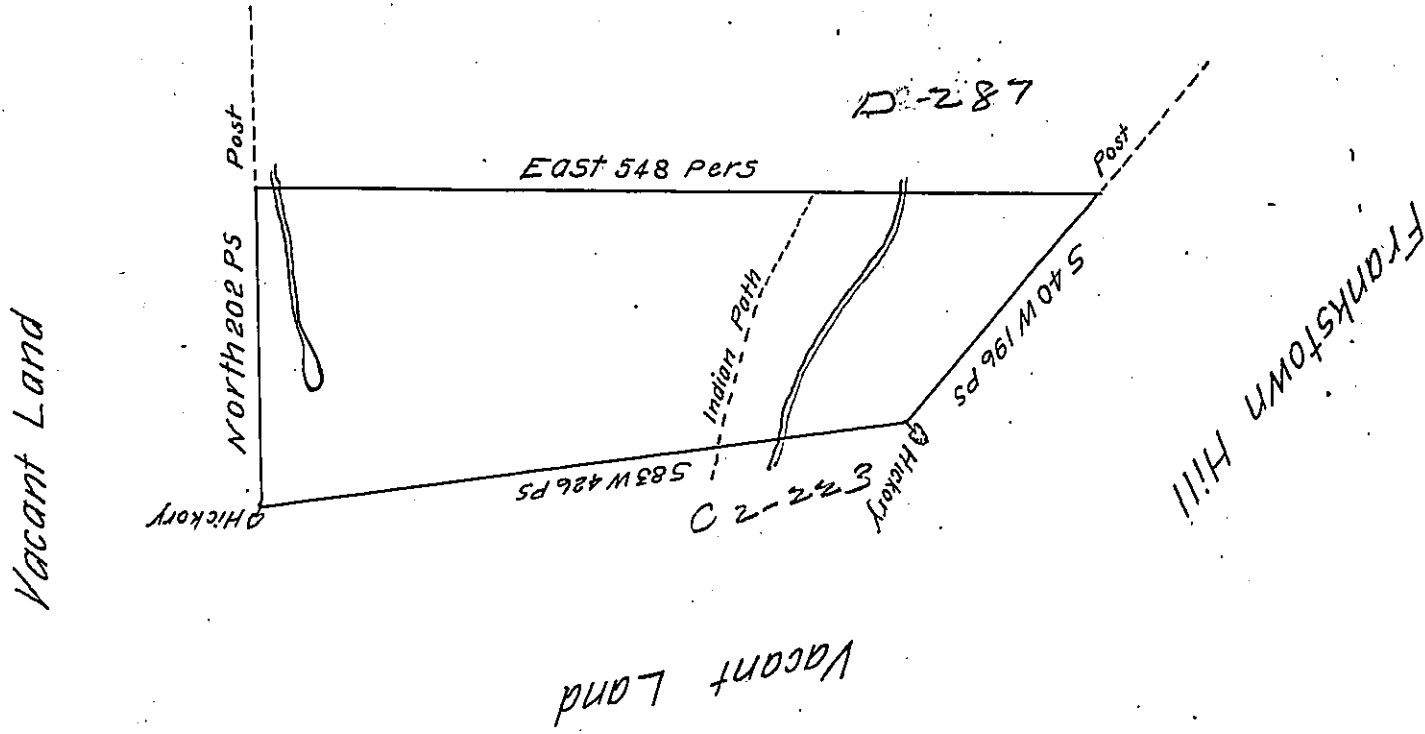


John Baynton & Samuel Wharton



A Draught of a Tract of Land Situate on the Indian Path above Frankstown which leads to the Great Island in the County of Cumberland Containing four hundred and ninety three Acres and a quarter and the usual allowance of six acres P.C. for Roads &c. Surveyed for John Baynton and Samuel Wharton in pursuance of a Warrant dated the 28. day of July 1766.

P. Richard Tea Dep<sup>y</sup> Survey<sup>r</sup>

To John Lukens Esq<sup>r</sup> Survey<sup>r</sup> Gen<sup>l</sup>.

IN TESTIMONY that the above is a copy of the original remaining on file in the Department of Internal Affairs of Pennsylvania, made conformably to an Act of Assembly approved the 16th day of February, 1833, I have hereunto set my Hand and caused the Seal of said Department to be affixed at Harrisburg, this fourth day of January 1904.

*George P. Brown*  
Secretary of Internal Affairs.